

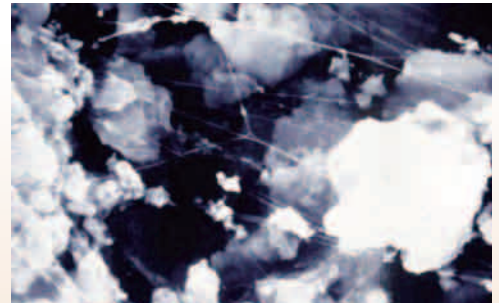
# Dust-Free Soil Stabilizer of NIPPO

# Tefix<sup>®</sup>

"Tefix" is an innovative soil stabilizer developed from dust prevention technology using Teflon resin. Tefix reduces dust dramatically during the soil stabilization process and has the same ease of operation and effectiveness as a conventional stabilizer.

## Features

- Dust Free** A micro fine fiber network of Teflon captures dust particles, so that almost no dust is generated during the soil stabilization process.
- Safety** Teflon resin is safe for humans as it is widely used in cooking pans. "Tefix" causes no pollution of soil and underground water.
- Easy to Use** "Tefix" is used as conventional solidification agents. "Tefix-Quicklime" does not need second mixing process and can reduce the work period.
- Solidification** "Tefix" improves stabilization of soil just like conventional cement and lime stabilizers.



● Microscopic Photograph of "Tefix"  
Teflon fibers of sub-micron diameter captures the particles of stabilizer and prevents dust generation.

## Comparison of dust production between "Tefix" and conventional soil stabilizer



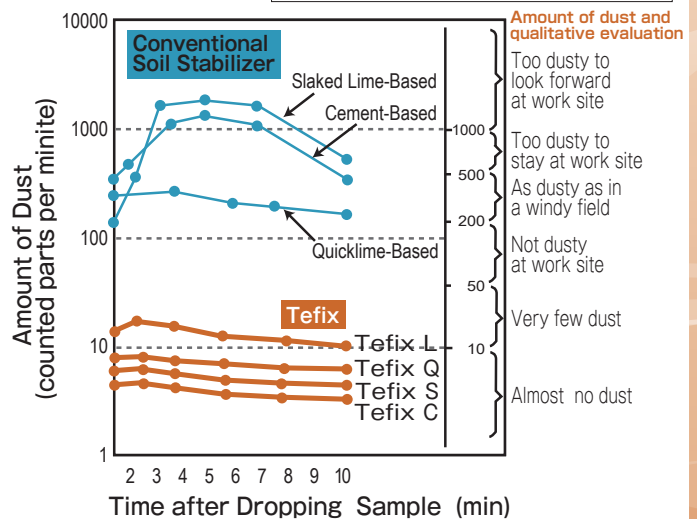
## Various Tefix Products

Product	Soil Type
Tefix C-Cement	General soft soil
Tefix S-Cement	Soil in which hexavalent chromium elution exceeds the standard
Tefix L-Lime	Clay soil, etc.
Tefix Q-Quicklime	Clay soil with high water content

※Soil stabilized with Tefix L and Q is not subjected to a hexavalent chromium elution test.

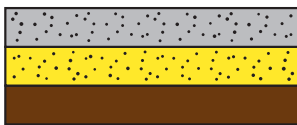
## Results of Dust Generation Test

Specimen was dropped at the front of a box-type wind tunnel. The amount of dust which was blown away was measured.

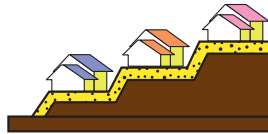


## Applications

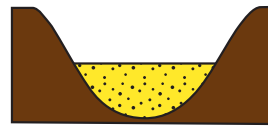
### ① Subgrade and Base Course



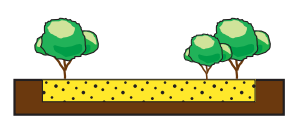
### ② Foundation of Houses



### ③ Lakes, Rivers

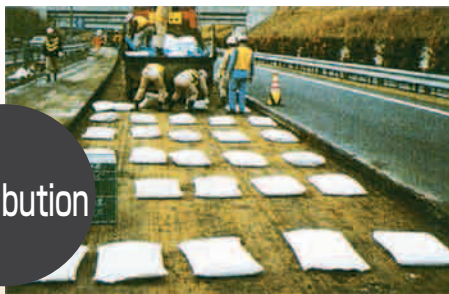


### ④ Parks



## Process

Distribution



Finishing



Mixing



The upper photograph shows an application process using 20 kg cement bags and the bottom photograph shows work using 1 ton cement bags. Even when 1 ton bags, which usually raise a lot of dust, "Tefix" generates almost no dust and minimally affect to the surrounding environments.

It is well suited for urban and residential districts, orchards, tea farms and other areas where influence to the effect to the environments should be minimized.

# NIPPO CORPORATION

<http://www.nippo-c.co.jp>

19-11, 1-CHOME, KYOBASHI, CHUO-KU, TOKYO, 104-8380, JAPAN  
 TEL +81-3-3563-6711 FAX +81-3-3567-7059