

Perfect Color LR-800

Unsurpassed Air Dry Inorganic Aqueous Color Coating



Sports Surfacing Field ▪ Recreation Ground ▪ Jogging Track ▪ Traffic Road ▪ Cycling Circuit ▪ Roller Skating Rink ▪ Parking Lot ▪ Fire Station ▪ Poolside

CSYT EnvironCon Co., Ltd.

Cheung Shing Yuk Tong Co., Ltd.

Room 1501-2 Emperor Group Centre, 288 Hennessy Road, Wanchai, Hong Kong
Tel: 2891 2213 Fax: 2834 7997 [Email: csytco@netvigator.com](mailto:csytco@netvigator.com)

Nippo Corporation

19-11, 1-chome, kyobashi, Chuo-ku, Tokyo 104, Japan

Perfect Color L R-800

Creates a coating which

- ensures a natural and unchanging long life,
- breathes naturally and
- has a natural, mat look

Perfect Color L R-800 is a color finish system using LANDEX, the major component of which is modified-polymer silica binder which permeates into the base material and is a unique inorganic material.

LANDEX is a non-polluting one-liquid-type water-soluble material. It remains waterproof throughout its life span and is heat, chemical and abrasive resistant; in addition of course, it has the characteristics of all inorganic materials of non-flammability and extreme hardness.

In addition, **Perfect Color L R-800** permeates into the base material, and forms a vertical and horizontal coating that breathes making it different from conventional organic coating materials. Therefore, **Perfect Color L R-800** opens up a new epoch in coating material.



CHARACTERISTICS

BREATHING

Perfect Color L R-800 breathes. It allows moisture to be released and evaporate naturally without causing peeling or blistering.

STRONG ADHESION

The silica binders, being minute crystalline molecules, can permeate through the micro-pores of the substrate like tree roots and makes an excellent bonding. This ensures a long life span without peeling off.

SKID RESISTANT

The surface coat of **Perfect Color L R-800** consists of an inorganic film containing a fine mineral aggregate and pigment bonded together by a modified-polymer silica binder (LANDEX). The binder provides the coating with a highly effective skid resistance property.



EASY MAINTANCE

New **Perfect Color L R-800** coating can be directly applied onto the old coating with minimal preparation.

COLORFASTNESS

The use of high quality inorganic burnt pigments (metallic oxide pigments) in **Perfect Color L R-800** ensures the original color of the surfacing remains virtually unchanged even under the constant radiation of ultraviolet rays of the sun.

EXCELLENT DURABILITY

Perfect Color L R-800 is extensively used for sport fields and grounds while must be particularly abrasion resistant needed.

NON-FLAMMABILITY

The major components of **Perfect Color L R-800** are extracted from mineral ores, which have the characteristics of non-flammability and extreme hardness. It does not produce any smoke and thus provides a safe environment for the users.

NON-TOXIC

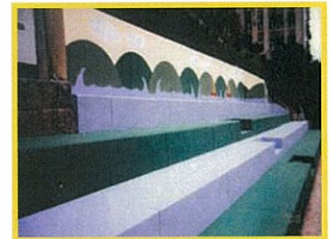
Perfect Color L R-800 is free of asbestos, mercury, lead, cyanide and other toxic substances.

WATER RESISTANCE

Perfect Color L R-800 has a very unique characteristic in that the water resistance of the coating is enhanced when it is submerged in water.

OIL AND ALKALI RESISTANT

The calcium dissolved from cement reacts with the binder to form a non-water-soluble coat.



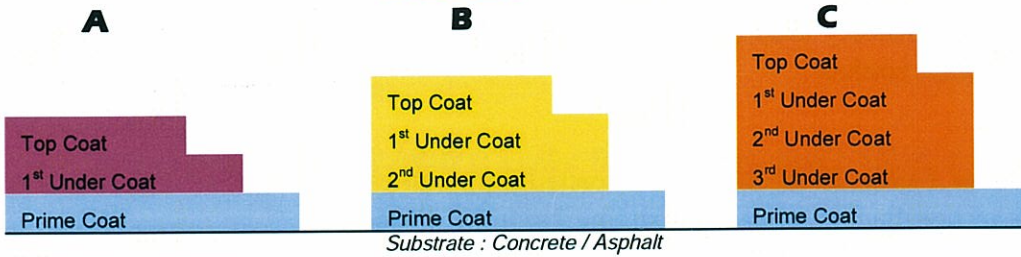
Origin : Japan

TEST DATA

Characteristics	Test Method	Perfect Color L R-800
Air permeability	JIS Z0208	390g/m ² /24 hours
Coefficient of skid resistance	JIS A1407	1 in dry condition 0.9 in wet condition
Adhesion	JIS A 6909 6.10	25kgf/cm ² at standard condition ≥22.4kgf/cm ² when immersed in water
Abrasion resistance	JIS K 7204 Taber's test 1000 rotations	0.12mm
Accelerated weather resistance	JIS A 6909 5.8 WS type, 2000 hours	No change
Water resistance	JIS K 5668 6.8, 2 years	Pass with no swell and peel
Cleaning resistance	JIS K5668 6.10, 1000 times	No breaking, no wear and no tear
Gasoline resistance	JIS K5400 7.7	No change
Freeze-thaw resistance	JIS A6910, 20 cycles	Pass
Incombustibility	JIS A1321 flame proof test Building Ministry notice no 1828 for incombustibility	Pass
Acid resistance	Critic acid (pH4) at 60°C for 7 days	No change
Alkali resistance	JIS K5668 6.9, 1 month	No change
Salt water resistance	3% salt water at room temperature for 3 months	No change

Perfect Color LR-800

TYPES



APPLICATION

Basketball Court / Soccer Pitch / Tennis Court / Volleyball Court / Badminton Court / Netball Court / Cycling Track / Jogging Track / Roller Skating Rink / Pavement / Walkways / Car Parking / Fire Station / Traffic Road / Wall Finish / Retaining Wall / Boundary / Pattern / Staircase / Planter Wall / EVA Access Area

The Substrate must be thoroughly DRY before starting work.

Normally, about three sunny days is required to dry up the substrate after the water testing or cleaning of substrate by water.

For maintenance, Perfect Color LR800 can be applied on the existing ground surface directly including acrylic, epoxy and polyurethane surface.



Standard Colors

Green B



Green C



Dark Green



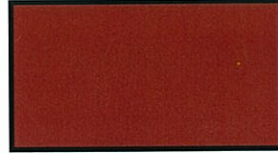
Pale Green



Brown A



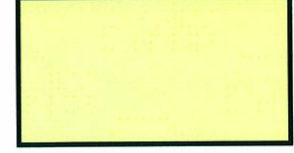
Brown B



Yellow



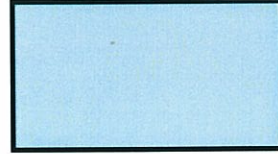
Beige



Blue



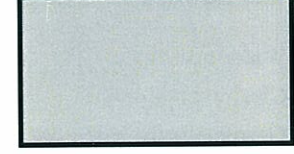
Pale Blue



White



Grey



There are some non-standard colors available, including red, navy blue and black. Color samples will be provided upon request.

Color Samples given above may differ slightly from actual colors of completed projects due to the limitations of color printing technique and subject to site consideration

CSYT EnvironCon Co., Ltd.

Cheung Shing Yuk Tong Co., Ltd.

Room 1501-2 Emperor Group Centre, 288 Hennessy Road, Wanchai, Hong Kong

Tel: 2891 2213 Fax: 2834 7997 [Email: csytco@netvigator.com](mailto:csytco@netvigator.com)

Nippo Corporation

19-11, 1-chome, kyobashi, Chuo-ku, Tokyo 104, Japan





